



MODEL
HB 100 ED
For
Hose I.D. 1" (2.5cm)



Material:	URETHANE	
Length:	16" / 40.6 cm	
Shipping Weight:	3 lbs / 1.4 kgs	
Shipping Dimensions:	21 x 8 x 4" / 53 x 21 x 10 cm	
Sling Model:	Metal "D-Ring" Sling	
Sling Type:	RS 16D	
*Sling height:	8" / 20 cm	
Sling Material:	UV Resistant Treated Polyester	
Rated Capacity:	1350 lbs/ 612 kgs @ 5:1 WLL	437 kgs/ 964 lbs @ 7:1 WLL
Maximum Temperature:	200° F / 93.3° C	

*Measured from top of the bun to the top of the sling

Notes: The most popular petroleum hose model Used throughout the world at refueling stations. Often used conjunction with retractors.

CE certified slings available at a rated capacity of 500 kgs @ 7:1



MODEL
HB 125 ED
For
Hose I.D. 1 1/4" (3.1cm)



Material:	URETHANE	
Length:	17.5" / 44.45 cm	
Shipping Weight:	3.5 lbs / 1.6 kgs	
Shipping Dimensions:	21 x 8 x 4" / 53.4 x 21 x 10 cm	
Sling Model:	Metal "D-Ring" Sling	
Sling Type:	RS 16D	
*Sling height:	7" / 17.8 cm	
Sling Material:	UV Resistant Treated Polyester	
Rated Capacity:	1350 lbs/ 612 kgs @ 5:1 WLL	437 kgs/ 964 lbs @ 7:1 WLL
Maximum Temperature:	200° F / 93.3° C	

*Measured from top of the bun to the top of the sling

Notes: Used with petroleum hose, refueling stations with hyhose retractors, hydraulic hose bundles and theatrical cabling.

CE certified slings available at a rated capacity of 500 kgs @ 7:1



MODEL
HB 150 ED
For
Hose I.D. 1 1/2" (3.8cm)



Material:	URETHANE	
Length:	19.5" / 49.5 cm	
Shipping Weight:	4 lbs / 1.8 kgs	
Shipping Dimensions:	21 x 8 x 4" / 53 x 21 x 10 cm	
Sling Model:	Metal "D-Ring" Sling	
Sling Type:	RS 16 D	
*Sling height:	6.5" / 16.5 cm	
Sling Material:	UV Resistant Treated Polyester	
Rated Capacity:	1350 lbs/ 612 kgs @ 5:1 WLL	437 kgs/ 964 lbs @ 7:1 WLL
Maximum Temperature:	200 ° F / 93.3° C	

*Measured from top of the bun to the top of the sling

Notes: Often used for bundled hoses/cables, like theatrical cable for lighting and sound.
CE certified slings available at a rated capacity of 500 kgs @ 7:1



MODEL
HB 200 ED
For
Hose I.D. 2" (5 cm)



Material:	URETHANE	
Length:	18" / 45.7 cm	
Shipping Weight:	4.5 lbs / 2 kgs	
Shipping Dimensions:	21 x 8 x 4" / 53 x 21 x 10 cm	
Sling Model:	Metal "D-Ring" Sling	
Sling Type:	RS 16D	
*Sling height:	7.25" / 18.4 cm	
Sling Material:	UV Resistant Treated Polyester	
Rated Capacity:	1350 lbs/ 612 kgs @ 5:1 WLL	437 kgs/ 964 lbs @ 7:1 WLL
Maximum Temperature:	200 ° F / 93.3° C	

*Measured from top of the bun to the top of the sling

Notes: Also available with Type 4 Hook-Eye sling (Model # RS 234H) for heavy duty jobs.
(WLL for RS 234H: 2000lb / 907kgs @ 5:1 or 648kgs / 1428lbs @ 7:1)
CE certified slings available at a rated capacity of 500 kgs @ 7:1



MODEL
HB 300 D
For
Hose I.D. 3" (8 cm)



Material:	URETHANE	
Length:	12.75" / 32.4 cm	
Shipping Weight:	4.25 lbs / 1.93 kgs	
Shipping Dimensions:	13 x 6 x 5" / 32 x 15 x 12.5 cm	
Sling Model:	Metal "D-Ring" Sling	
Sling Type:	RS 234D	
*Sling height:	8" / 20 cm	
Sling Material:	UV Resistant Treated Polyester	
Rated Capacity:	2000 lbs/907 kgs @ 5:1 WLL	648 kgs/1428 lbs @ 7:1 WLL
Maximum Temperature:	200° F / 93.3° C	

*Measured from top of the bun to the top of the sling

Notes: Hosebun for 3" (7.6 cm) hose with "D-Ring" sling attachment for easier mounting.
CE certified slings available at a rated capacity of 1000 kgs @ 7:1



MODEL
HB 300 H
For
Hose I.D. 3" (7.6 cm)



Material:	URETHANE
Length:	12.75" / 32.4 cm
Shipping Weight:	4.25 lbs / 1.9 kgs
Shipping Dimensions:	13 x 6 x 5" or 36 x 15 x 13 cm
Sling Type:	Type 4 Hook Eye
Sling Model:	RS 234 H
*Sling height: <small>*Measured from top of the bun to the top of the sling</small>	14.75 " / 37.5 c m
Sling Material:	UV Resistant Treated Polyester
Rated Capacity:	2000 lbs/907 kgs @ 5:1 WLL
	648 kgs/1429 lbs @ 7:1 WLL
Maximum Temperature:	200 ° F / 93.3° C

Notes: Hosebun for 3" (7.6cm) hose with type 4 hook eye sling for increased strength and work safety.

CE certified slings available at a rated capacity of 1000 kgs @ 7:1



MODEL
HB 400 D
For
Hose I.D. 4" (10 cm)



Material:	URETHANE	
Length:	11.5" / 21.22 cm	
Shipping Weight:	5 lbs / 2.27 kgs	
Shipping Dimensions:	13 x 8 x 7" / 32 x 20 x 18 cm	
Sling Model:	Metal "D-Ring" Sling	
Sling Type:	RS 234D	
*Sling height:	8" / 20 cm	
Sling Material:	UV Resistant Treated Polyester	
Rated Capacity:	2000 lbs/907 kgs @ 5:1 WLL	648 kgs/1428 lbs @ 7:1 WLL
Maximum Temperature:	200° F / 93.3° C	

*Measured from top of the bun to the top of the sling

Notes: Hosebun for 4" (10cm) hose with "D-Ring" sling attachment for easier mounting.
CE certified slings available at a rated capacity of 1000 kgs @ 7:1



MODEL
HB 400 H
For
Hose I.D. 4" (10 cm)



Material:	URETHANE
Length:	11.5" / 28.75 cm
Shipping Weight:	5 lbs / 2.3 kgs
Shipping Dimensions:	13 x 8 x 7" or 32 x 20 x 18 cm
Sling Type:	Type 4 Hook Eye
Sling Model:	RS 234 H
*Sling height: <small>*Measured from top of the bun to the top of the sling</small>	14.75 " / 37.2 cm
Sling Material:	UV Resistant Treated Polyester
Rated Capacity:	2000 lbs/907 kgs @ 5:1 WLL
	648 kgs/1429 lbs @ 7:1 WLL
Maximum Temperature:	200 ° F / 93.3° C

Notes: Hosebun for 4" (10cm) hose with type 4 hook eye sling for increased strength and work safety.

CE certified slings available at a rated capacity of 1000 kgs @ 7:1



MODEL
HB 200 SRD
For
Hose I.D. 2" (5 cm)



Material:	URETHANE	
Length:	12" / 30.5 cm	
Shipping Weight:	2.5 lbs / 1.1 kgs	
Shipping Dimensions:	13 x 5 x 3.5" / 33 x 13 x 9 cm	
Sling Model:	Metal "D-Ring" Sling	
Sling Type:	RS 16D	
*Sling height:	7.25" / 18.4 cm	
Sling Material:	UV Resistant Treated Polyester	
Rated Capacity:	1350 lbs/ 612 kgs @ 5:1 WLL	437 kgs/ 964 lbs @ 7:1 WLL
Maximum Temperature:	200 ° F / 93.3° C	

*Measured from top of the bun to the top of the sling

Notes: Also available with Type 4 Hook-Eye sling (Model # RS 234H) for heavy duty jobs.

(WLL for RS 234H: 2000lb / 907kgs @ 5:1 or 648kgs / 1428lbs @ 7:1)

CE certified slings available at a rated capacity of 500 kgs @ 7:1



MODEL
HB 600 H
For
Hose I.D. 6" (15 cm)



Material:	URETHANE
Length:	21.5" / 54.6 cm
Shipping Weight:	17 lbs / 7.7 kgs
Shipping Dimensions:	23 x 10 x 15" or 57 x 23 x 31 cm
Sling Type:	Type 4 Hook Eye
Sling Model:	RS 600 H
*Sling height: <small>*Measured from top of the bun to the top of the sling</small>	22.5" / 57.15 cm
Sling Material:	UV Resistant Treated Polyester
Rated Capacity:	8000 lbs / 3629 kgs @ 5:1 WLL
	2590 kgs / 5700 lbs @ 7:1 WLL
Maximum Temperature:	200 ° F / 93.3° C

Notes: Use Heat Wrap to extend temperature capacity up to 1100°F/593°C (Model# HW600). For 5" ID hoses, please ask us about our hosebun liners to ensure a secure fit. (Model# HBL 600).

CE certified slings available at a rated capacity of 3000 kgs @ 7:1



MODEL
HB 800 H
For
Hose I.D. 8" (20 cm)



Material:	URETHANE
Length:	30.5" / 77.5 cm
Shipping Weight:	37 lbs / 16.8 kgs
Shipping Dimensions:	32 x 12 x 15" or 81 x 31 x 38 cm
Sling Type:	Type 4 Hook Eye
Sling Model:	RS 800H
*Sling height: <small>*Measured from top of the bun to the top of the sling</small>	18" / 45.7 cm
Sling Material:	UV Resistant Treated Polyester
Rated Capacity:	12000 lbs / 5443 kgs @ 5:1 WLL
	3888 kgs / 8570 lbs @ 7:1 WLL
Maximum Temperature:	200° F / 93.3° C

Notes: Use Heat Wrap to extend temperature capacity up to 1100°F / 593°C (Model# HW800).
CE certified slings available at a rated capacity of 4000 kgs @ 7:1 WLL



MODEL
HB 1000 H
For
Hose I.D. 10" (25 cm)



Material:	URETHANE
Length:	40.75" / 103.5 cm
Shipping Weight:	62 lbs / 28 kgs
Shipping Dimensions:	42 x 15 x 18" or 106 x 37.5 x 46 cm
Sling Type:	Type 4 Hook Eye
Sling Model:	RS 1000H
*Sling height: <small>*Measured from top of the bun to the top of the sling</small>	19.25" / 48.90 cm
Sling Material:	UV Resistant Treated Polyester
Rated Capacity:	15000 lbs / 6803 kgs @ 5:1 WLL
	4860 kgs / 10700 lbs @ 7:1 WLL
Maximum Temperature:	200° F / 93.3° C

Notes: Use Heat Wrap to extend temperature capacity up to 1100°F / 593°C (Model# HW 1000).
CE certified slings available at a rated capacity of 5000 kgs @ 7:1 WLL



MODEL
HB 1200 H
For
Hose I.D. 12" (30 cm)



Material:	URETHANE
Length:	40.75" / 103.5 cm
Shipping Weight:	62 lbs / 28 kgs
Shipping Dimensions:	42 x 15 x 18" or 106 x 37.5 x 46 cm
Sling Type:	Type 4 Hook Eye
Sling Model:	RS 1000 H
*Sling height: <small>*Measured from top of the bun to the top of the sling</small>	23.25 " / 59.1 cm
Sling Material:	UV Resistant Treated Polyester
Rated Capacity:	15000 lbs / 6803 kgs @ 5:1 WLL
	4860 kgs / 10700 lbs @ 7:1 WLL
Maximum Temperature:	200 ° F / 93.3° C

Notes: Same mold as the HB 1000H but with a longer sling to accommodate a 12" (30cm) I.D. hose.
 Use Heat Wrap to extend temperature capacity up to 1100°F / 593°C (Model# HW 1200)
CE certified slings available at a rated capacity of 5000 kgs @ 7:1 WLL



HOSECADDY™

MODEL HC1000



Material:	Each Hosecaddy™ is made with a rugged steel construction which then undergoes hot dipped galvanization and powder coated to ensure years of maintenance-free protection performance.
Weight:	Steel Frame: 82lbs / 37kgs Hardened Aluminum Frame: 59lbs / 27kgs
Dimensions:	43x20.25x17.5" / 109.22x51.44x44.45cm
Load Capacity:	Heavy duty, easy rolling 6" swivel castors, on all four corners, have a working load capacity of 1600lbs / 726kgs.
Hose Dimensions:	Designed for 6" to 12" large bore hose, or, a bundle of small 3 to 4" hoses.

NOTES: - Available in Aluminum: Model# HC 1000A, or Steel: Model# HC 1000M.
- Standard Colour: Inferno Orange; Additional colours available upon request.



HOSEHORSE™

MODEL HH

Model# HH 24-2345
-Fits OD Hose up to:
5.5" / 14cm
- Ship Weight:
5lbs / 2.3kgs



Material:	Molded Plastic
Shipping Weight:	From 4 to 18 lbs; depending on model
Dimensions:	Depends on Model
Hose Dimensions:	Models available to fit hose sizes from 2" / 5.1cm, up to, 24" / 61 cm

Model# HH 24-6
- 24" / 91cm High
- Fits 6" / 15.24cm OD Hose
- Square bottom
- Red Only
- Ship Weight:
9 lbs / 4.08kgs
- Ratches & Straps avail.



Model# HH 24-1012
- 24" / 91cm High
- Fits OD Hose 10-12" / 25-30cm
- Comes with Ratchets & Straps
- Ship weight:
18 lbs / 52 kgs





HoseHOG™

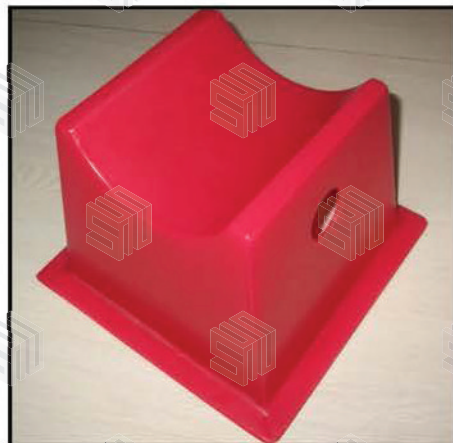
MODEL HG 7-234

Hoses are laid on top of rocks and the vibration from the pumps extend into the hoses and pin holes occur.

How do you prevent the costly event of a spill from OIL PRODUCED FLUID or ANYTHING THAT IS HAULED?

the answer is simple!

HoseHOG: Hose off Ground



Material:	Made of Polyurethane
Weight:	1.2lbs / .55kgs ; Easy to set up on your truck.
Height:	Stands 7" high
Hose Dimensions:	The contoured radius of the HoseHOG accomodates 2", 3" and 4" ID hoses