



# COMPONENTS OF THE TriSAFLOK® BLEED OFF COUPLER.

FEMALE COUPLING

Type: B, BW, D, DLF, DW, C, DC, CC, CS...

MALE ADAPTORS  
TYPES: A, E, F, DP, EC...

PATENTED SELF-LOCKING  
AND BLEED OFF CAM ARM

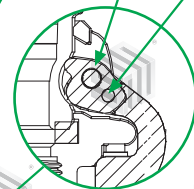
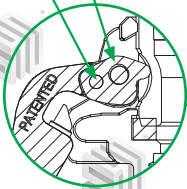
CAM PLATE

PIN

CAM PIN

CAM PLATE

PIN



SPRING

RETAINING SEAT

COLLET  
WASHER

PROTECTING  
GUARD PLATE

SAFETY  
POSITION  
ROD

GASKET

THREAD  
SPECIFICATION:  
ANSI B 1.20.1  
DIN 2999  
BS 21  
DIN 259  
ISO 228  
JIS B 0203

FINGER RINGS



**TriSAFLOK® -A ADAPTOR  
(NPT, BSP, BSPT)**



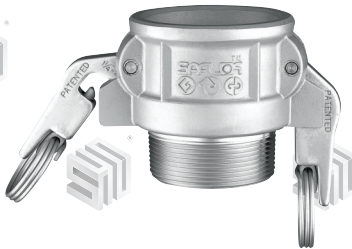
MM.	INCH
15	1/2
20	3/4
25	1
32	1 1/4
40	1 1/2
50	2
65	2 1/2
80	3
100	4

**TriSAFLOK® -E ADAPTOR**



MM.	INCH
15	1/2
20	3/4
25	1
32	1 1/4
40	1 1/2
50	2
65	2 1/2
80	3
100	4

**TriSAFLOK® -B COUPLER  
(NPT, BSP, BSPT)**



MM.	INCH
15	1/2
20	3/4
25	1
32	1 1/4
40	1 1/2
50	2
65	2 1/2
80	3
100	4

**TriSAFLOK® -F ADAPTOR  
(NPT, BSP, BSPT)**



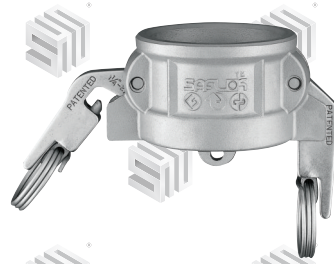
MM.	INCH
15	1/2
20	3/4
25	1
32	1 1/4
40	1 1/2
50	2
65	2 1/2
80	3
100	4

**TriSAFLOK® -C COUPLER**



MM.	INCH
15	1/2
20	3/4
25	1
32	1 1/4
40	1 1/2
50	2
65	2 1/2
80	3
100	4

**TriSAFLOK® -DC DUST CAP**



MM.	INCH
15	1/2
20	3/4
25	1
32	1 1/4
40	1 1/2
50	2
65	2 1/2
80	3
100	4

**TriSAFLOK® -D COUPLER  
(NPT, BSP, BSPT)**



MM.	INCH
15	1/2
20	3/4
25	1
32	1 1/4
40	1 1/2
50	2
65	2 1/2
80	3
100	4

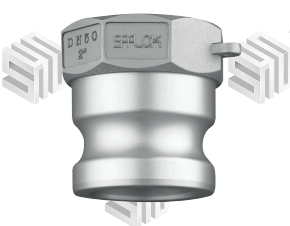
**TriSAFLOK® -DP DUST PLUG**



MM.	INCH
15	1/2
20	3/4
25	1
32	1 1/4
40	1 1/2
50	2
65	2 1/2
80	3
100	4



**TriSAFLOK® -AF ADAPTOR**  
AS PER EN- 14420-7



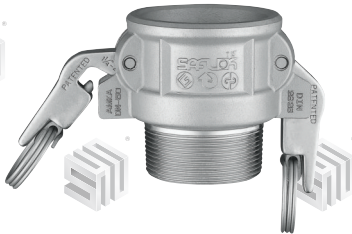
MM.	INCH
15	1/2
20	3/4
25	1
32	1 1/4
40	1 1/2
50	2
65	2 1/2
80	3
100	4

**TriSAFLOK® -EC ADAPTOR**  
AS PER EN- 14420-7



MM.	INCH
15	1/2
20	3/4
25	1
32	1 1/4
40	1 1/2
50	2
65	2 1/2
80	3
100	4

**TriSAFLOK® -BF COUPLER**  
AS PER EN- 14420-7



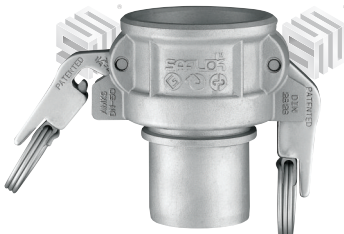
MM.	INCH
15	1/2
20	3/4
25	1
32	1 1/4
40	1 1/2
50	2
65	2 1/2
80	3
100	4

**TriSAFLOK® -FF ADAPTOR**  
AS PER EN- 14420-7



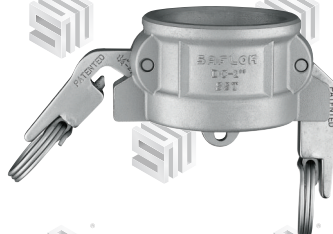
MM.	INCH
15	1/2
20	3/4
25	1
32	1 1/4
40	1 1/2
50	2
65	2 1/2
80	3
100	4

**TriSAFLOK® -DF COUPLER**  
AS PER EN- 14420-7



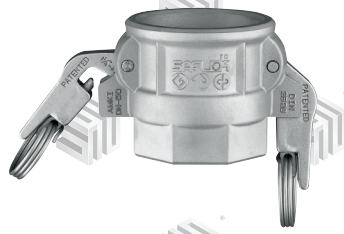
MM.	INCH
15	1/2
20	3/4
25	1
32	1 1/4
40	1 1/2
50	2
65	2 1/2
80	3
100	4

**TriSAFLOK® -DC DUST CAP**  
AS PER EN- 14420-7



MM.	INCH
15	1/2
20	3/4
25	1
32	1 1/4
40	1 1/2
50	2
65	2 1/2
80	3
100	4

**TriSAFLOK® -DBSF COUPLER**  
AS PER EN- 14420-7



MM.	INCH
15	1/2
20	3/4
25	1
32	1 1/4
40	1 1/2
50	2
65	2 1/2
80	3
100	4

**TriSAFLOK® -DP DUST PLUG**  
AS PER EN- 14420-7



MM.	INCH
15	1/2
20	3/4
25	1
32	1 1/4
40	1 1/2
50	2
65	2 1/2
80	3
100	4